



Planning and Transportation Committee

PRESENTATION

Date: TUESDAY, 28 JANUARY 2020
Time: 10.00 am
Venue: LIVERY HALL - GUILDHALL

Any drawings and details of materials submitted for approval will be available for inspection by Members in the Livery Hall from Approximately 9:30 a.m.

John Barradell
Town Clerk and Chief Executive

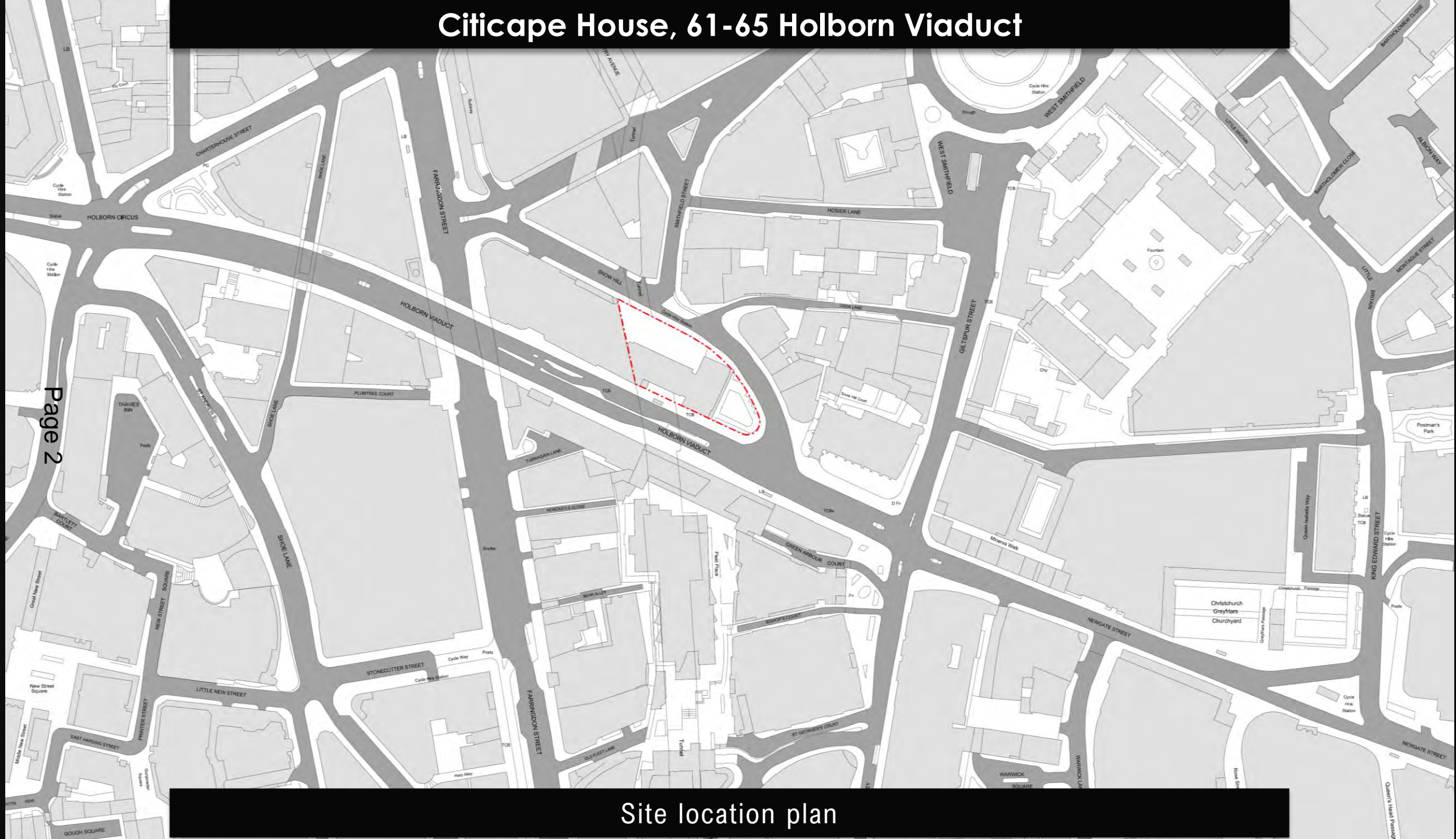
This page is intentionally left blank

PLANNING & TRANSPORTATION COMMITTEE

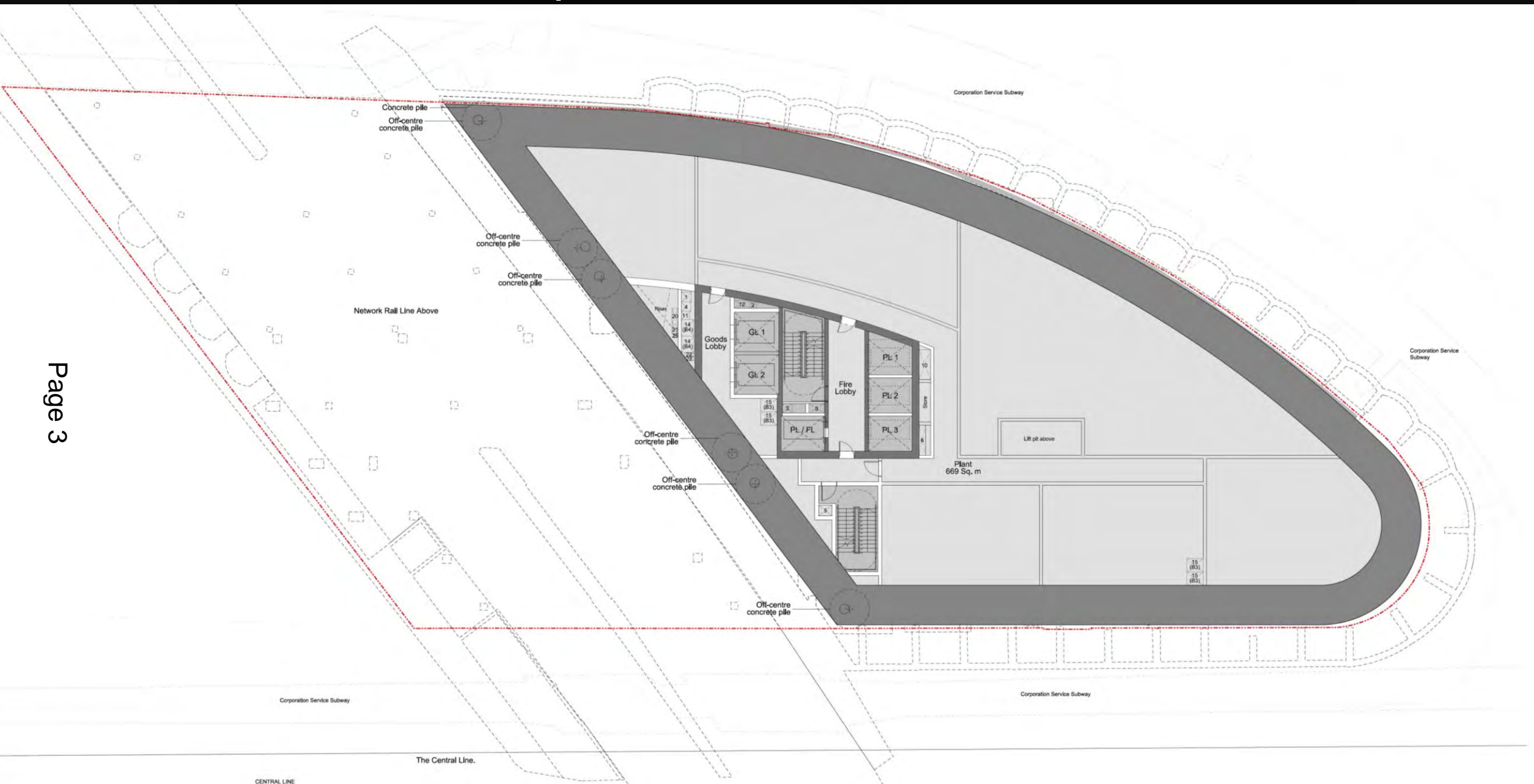
28 January 2020



Citicape House, 61-65 Holborn Viaduct

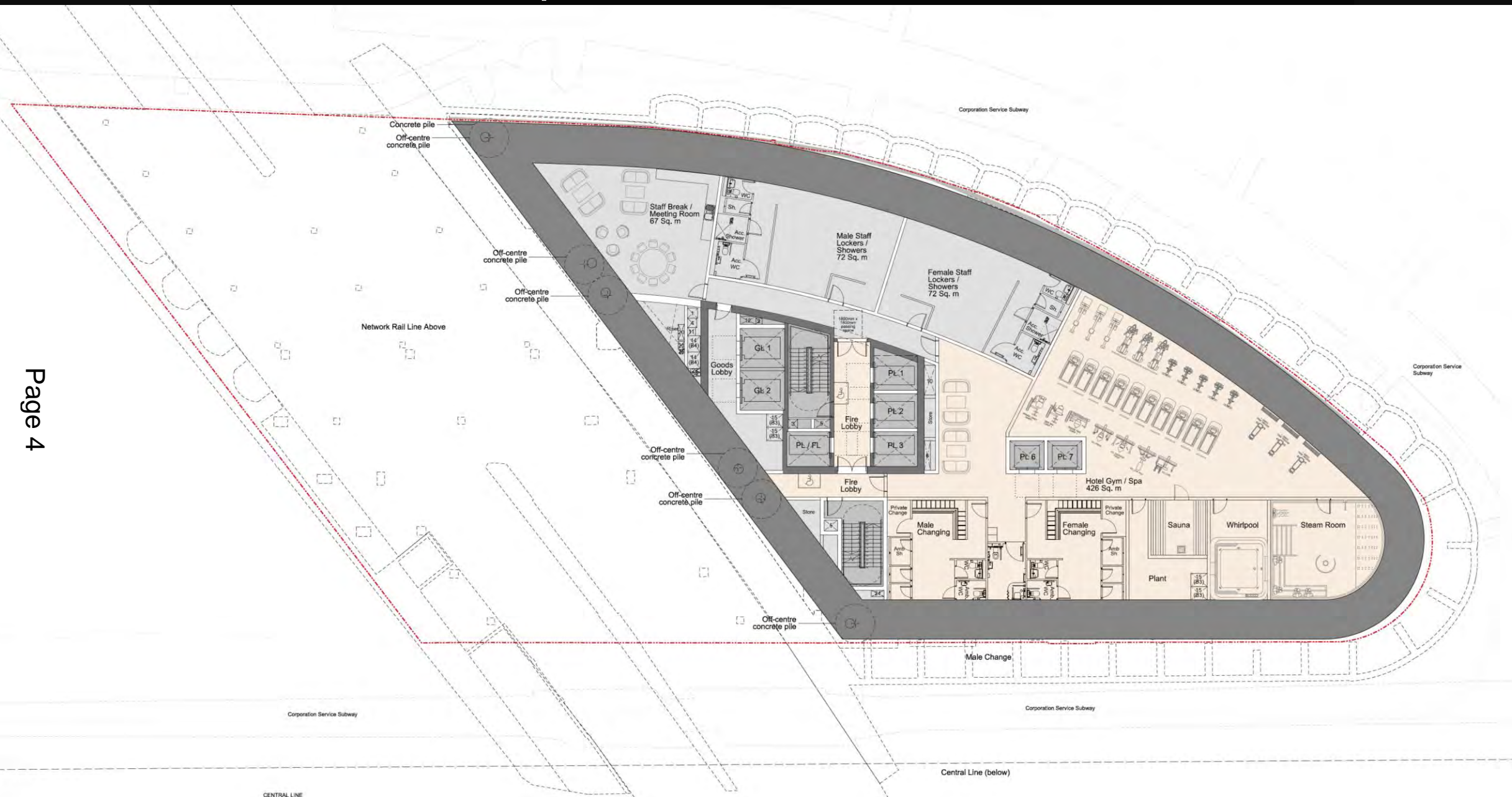


Citicape House, 61-65 Holborn Viaduct



Basement level 4 – General arrangement

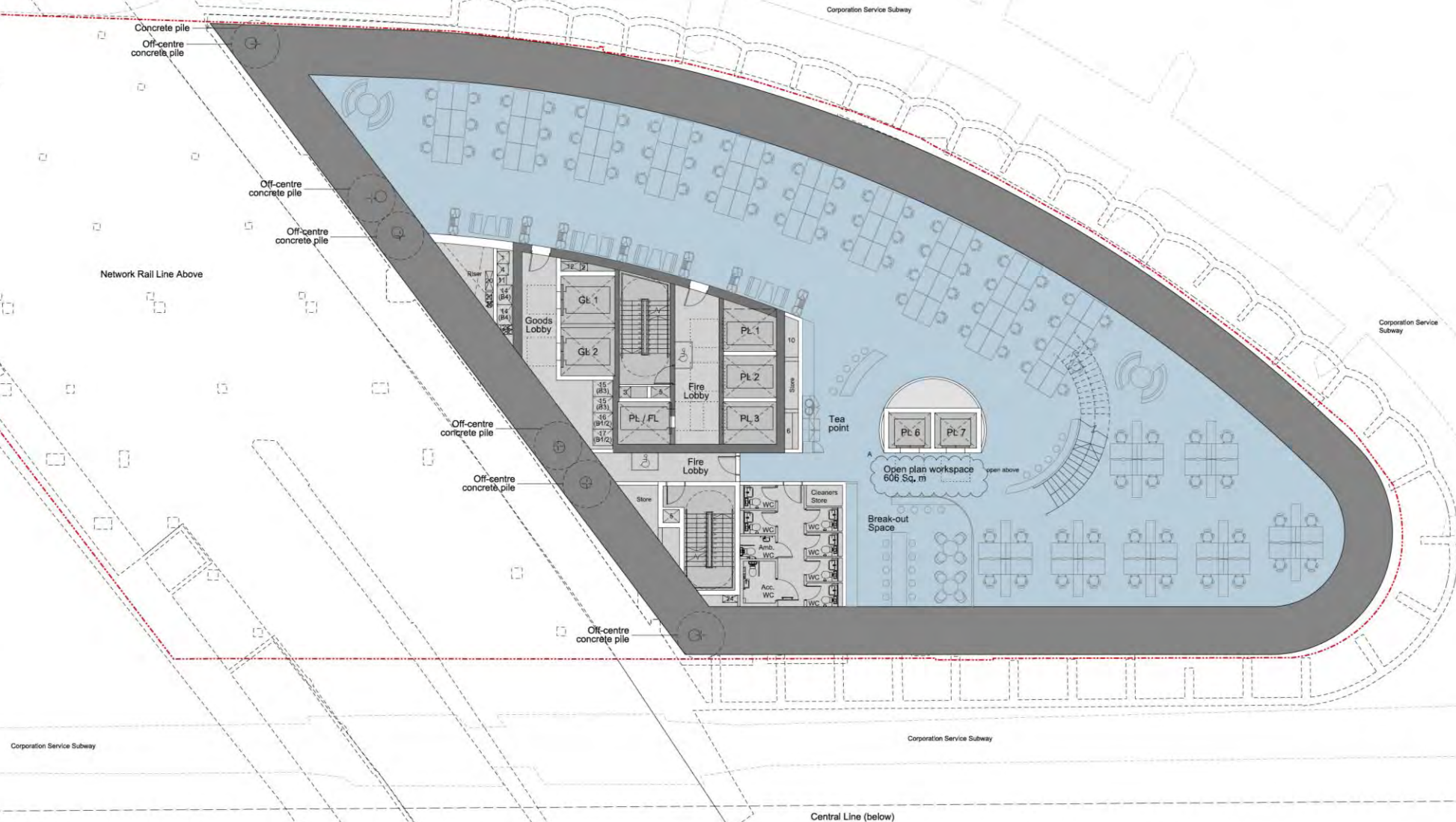
Citicape House, 61-65 Holborn Viaduct



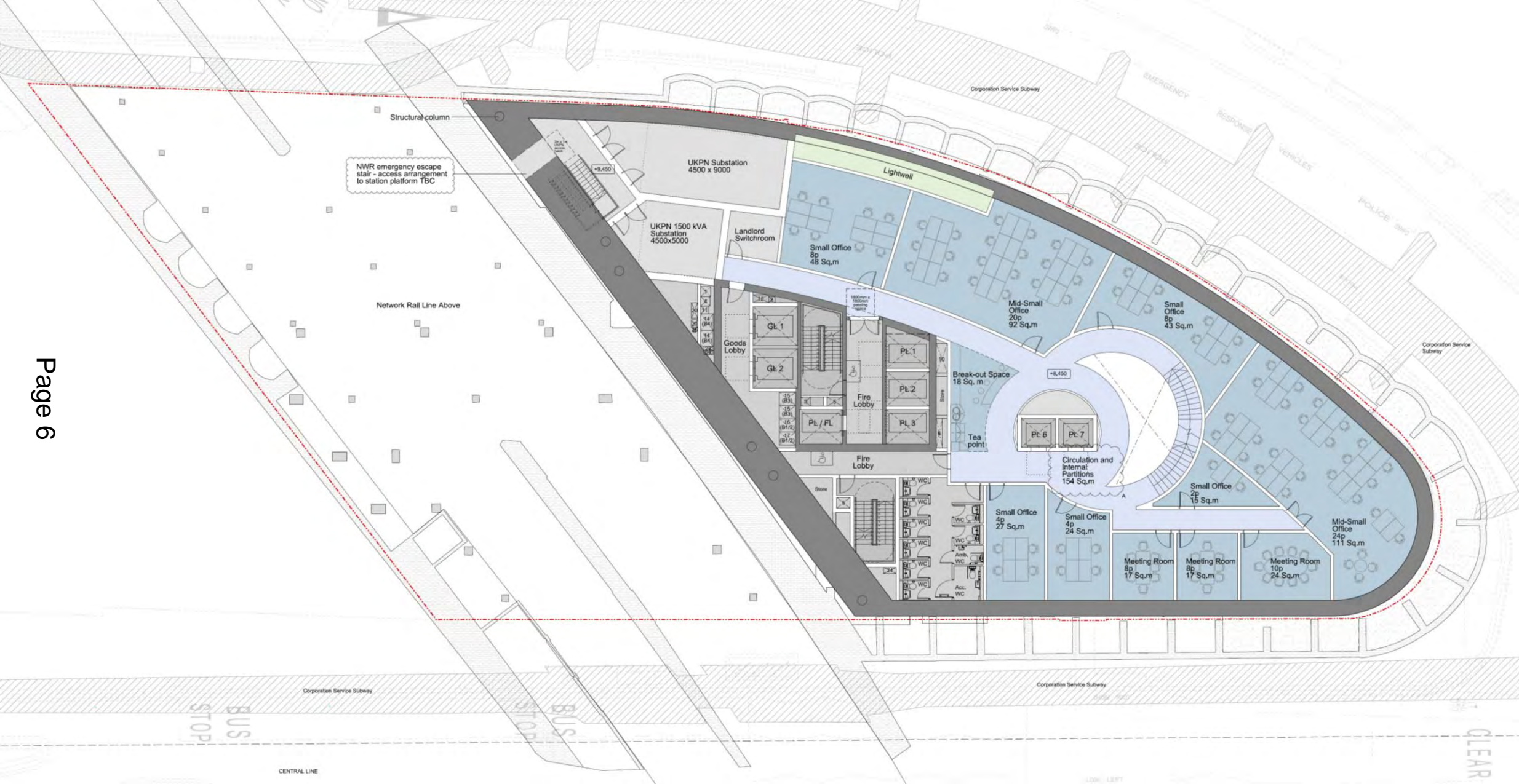
Basement level 3 – General arrangement

Basement level 2 – General arrangement

CENTRAL LINE

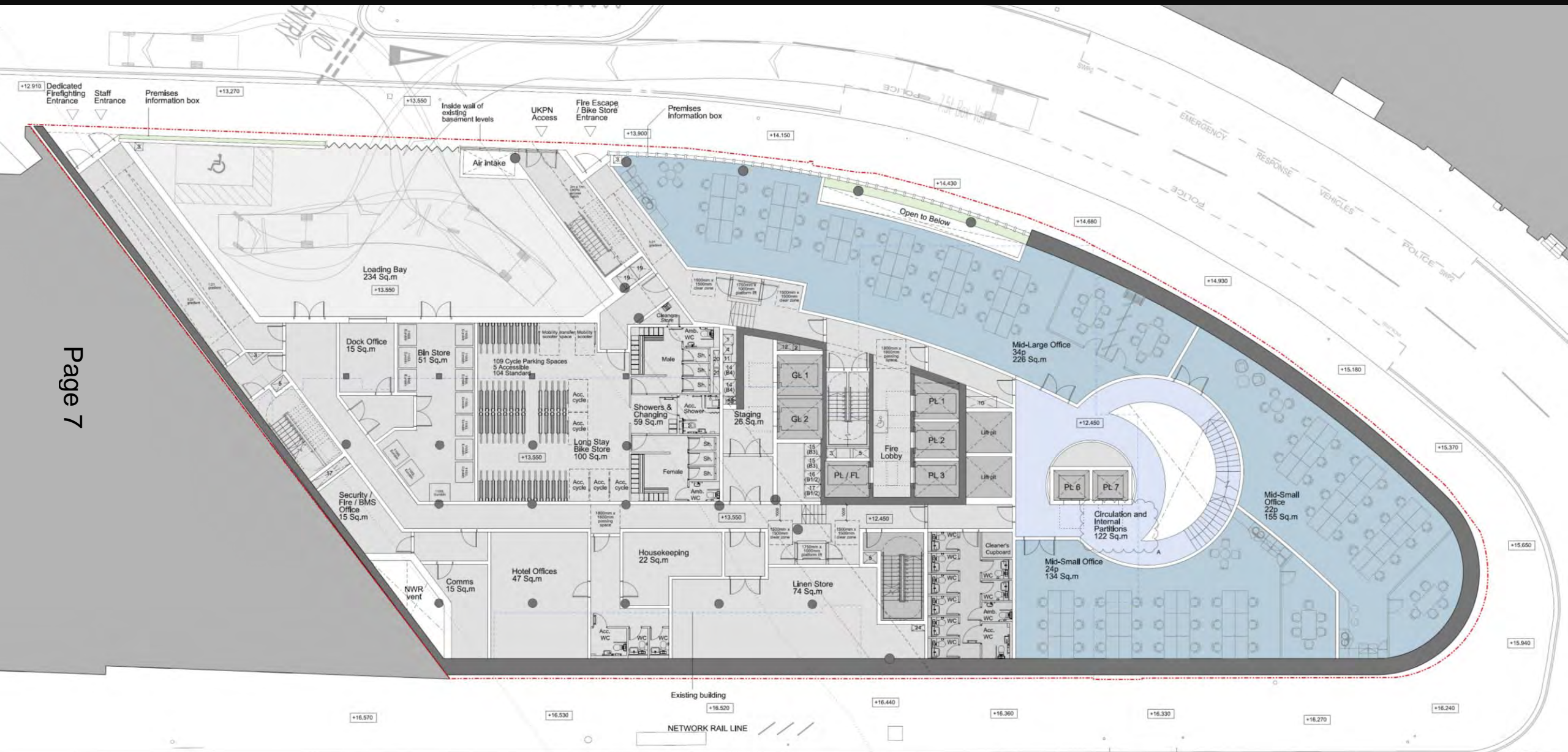


Citicape House, 61-65 Holborn Viaduct



Basement level 1 – General arrangement

Citicape House, 61-65 Holborn Viaduct



Lower ground floor – General arrangement

[illegible]

Citicape House, 61-65 Holborn Viaduct

Architectural floor plan of the first floor of Citicape House, showing various office spaces, a central circulation area, and a curved exterior wall. The plan includes labels for rooms like "Large Office 62p 334 Sq. m", "Small Office 4p 24 Sq. m", "Print Room 39 Sq. m", and "Circulation and Internal Partitions 205 Sq. m". It also shows external features like "Air extract", "NWR vent", and "Existing building".

Page 9

First floor – General arrangement

Level 2 – General arrangement

Room Schedule

	Standard 24-25m ²	Interconnecting 24m ²	UA 32-34m ²	Executive 34m ²	Suite 41-77m ²	Total
Level 2	25	10	4	4	2	45
Level 3	25	10	5	3	2	45
Level 4	25	10	5	3	2	45
Level 5	25	10	5	3	2	45
Level 6	26	10	5	3	2	46
Level 7	26	10	5	3	2	46
Level 8	26	10	4	4	2	46
Level 9	26	10	4	4	2	46
Level 10	4	0	0 (+1)	5	9*	18
Total	208	80	37	32	25	382

* Includes one UA Suite
(+1 UA Suite)



Citicape House, 61-65 Holborn Viaduct



Level 3 – General arrangement

Level 4 – General arrangement

Citicape House, 61-65 Holborn Viaduct



Level 5 – General arrangement

Level 6 – General arrangement

Room Schedule

	Standard 24-25m ²	Interconnecting 24m ²	UA 32-34m ²	Executive 30-33m ²	Suite 41-77m ²	Total
Level 2	25	10	4	4	2	45
Level 3	25	10	5	3	2	45
Level 4	25	10	5	3	2	45
Level 5	25	10	5	3	2	45
Level 6	26	10	5	3	2	46
Level 7	26	10	5	3	2	46
Level 8	26	10	4	4	2	46
Level 9	26	10	4	4	2	46
Level 10	4	0	0 (+1)	5	9*	18
Total	208	80	37	32	25	382






* Includes one UA Suite

Citicape House, 61-65 Holborn Viaduct



Level 8 – General arrangement

Room Schedule

	 Standard 24-25m²	 Interconnecting 24m²	 UA 32-34m²	 Executive 30-33m²	 Suite 41-77m²	Total
Level 2	25	10	4	4	2	45
Level 3	25	10	5	3	2	45
Level 4	25	10	5	3	2	45
Level 5	25	10	5	3	2	45
Level 6	26	10	5	3	2	46
Level 7	26	10	5	3	2	46
Level 8	26	10	4	4	2	46
Level 9	26	10	4	4	2	46
Level 10	4	0	0 (+1)	5	9*	18
Total	208	80	37 (+1 UA Suite)	32	25	382

* Includes one UA Suite

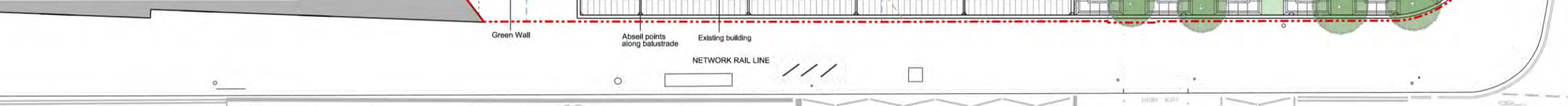


Citicape House, 61-65 Holborn Viaduct



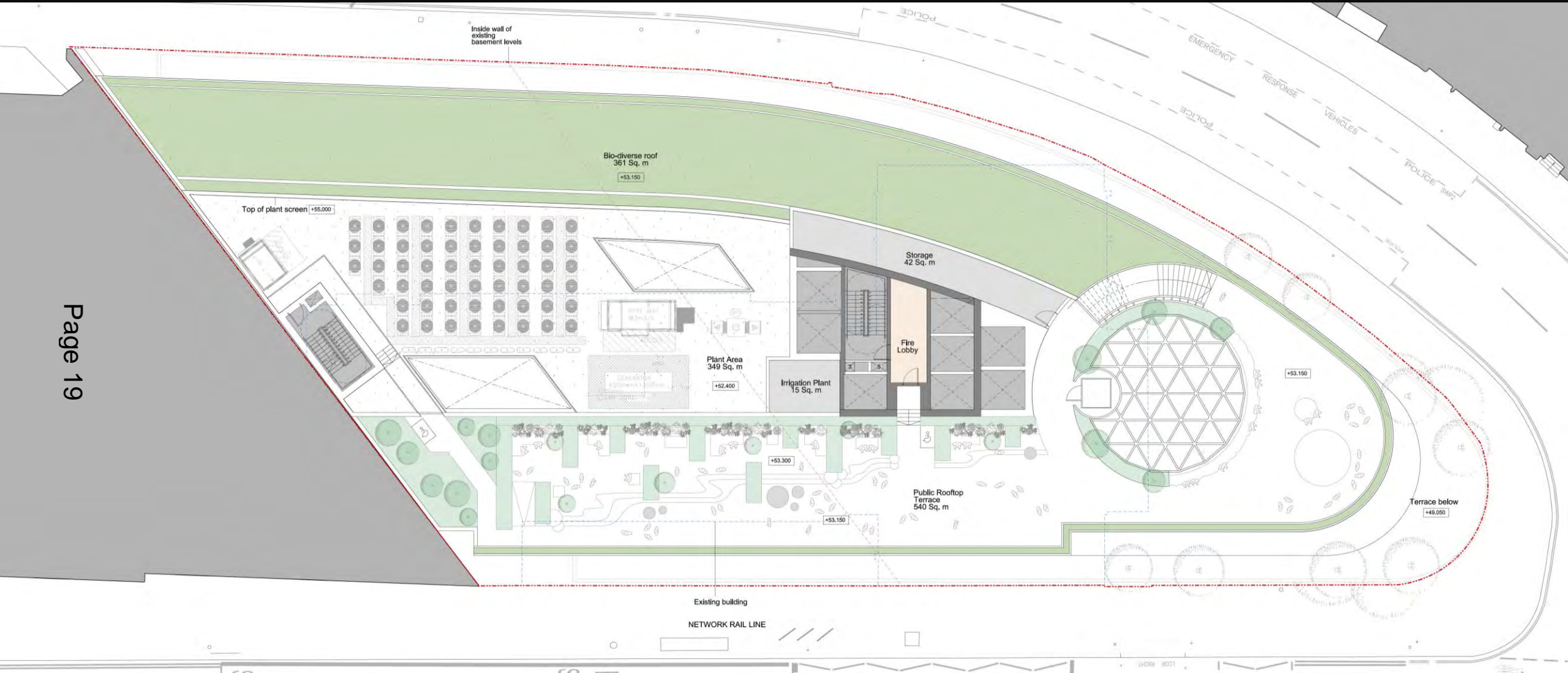
Level 9 – General arrangement

Citicape House, 61-65 Holborn Viaduct



Citicape House, 61-65 Holborn Viaduct

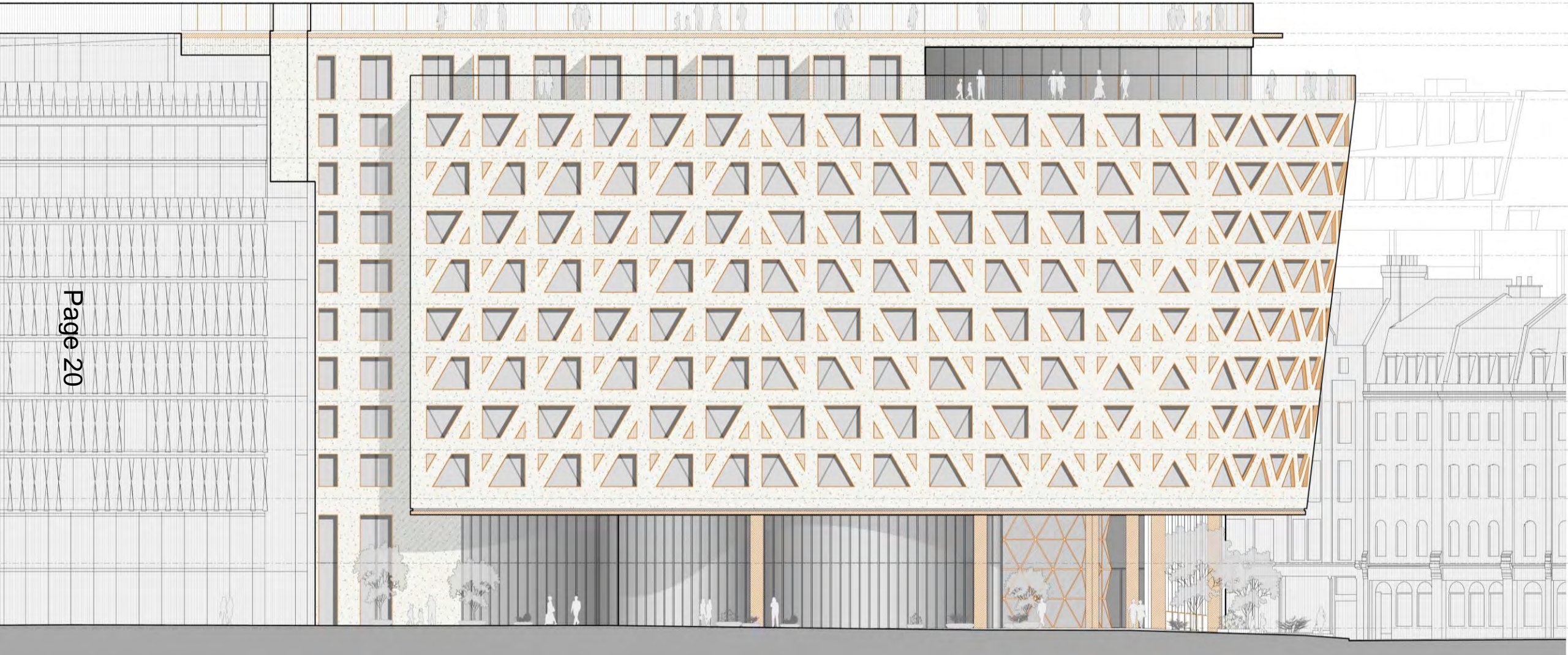
Page 19



Level 11 Roof Terrace – General arrangement

Citicape House, 61-65 Holborn Viaduct

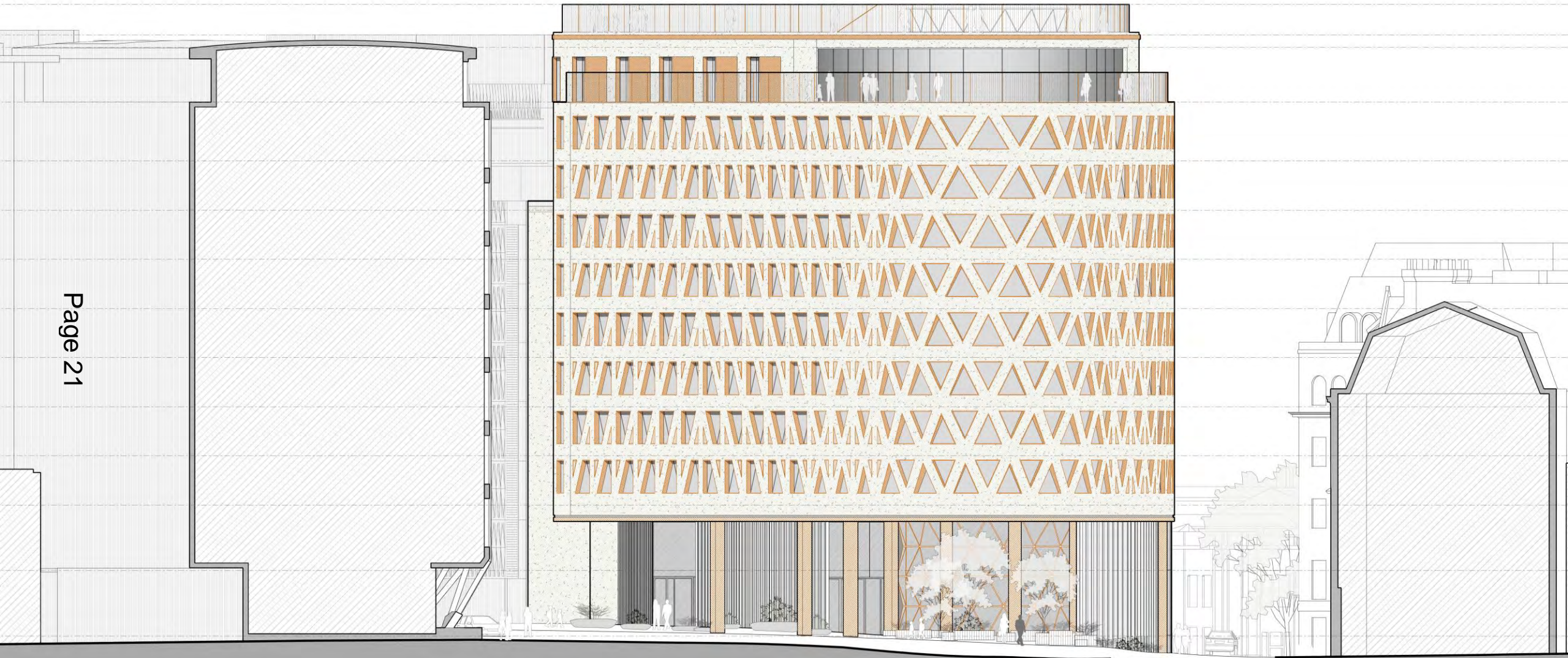
Page 20



Elevation - Holborn Viaduct

Citicape House, 61-65 Holborn Viaduct

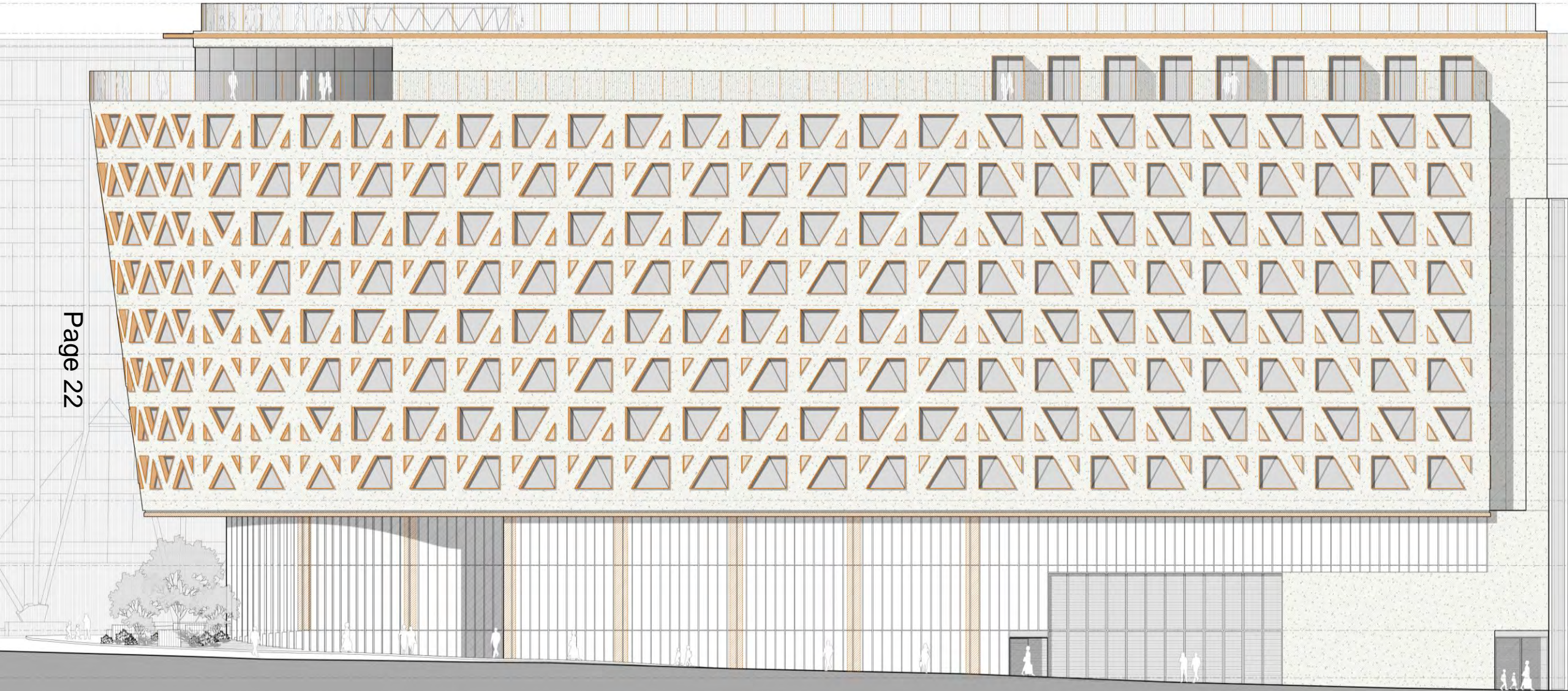
Page 21



Elevation – Holborn Viaduct & Snow Hill Junction

Citicape House, 61-65 Holborn Viaduct

Page 22



Elevation – Snow Hill

Citicape House, 61-65 Holborn Viaduct

Page 23



Existing view from Charterhouse Street

Citicape House, 61-65 Holborn Viaduct

Page 24



Proposed view from Charterhouse Street

Citicape House, 61-65 Holborn Viaduct



Existing view from Holborn Viaduct

Citicape House, 61-65 Holborn Viaduct



Proposed view from Holborn Viaduct

Citicape House, 61-65 Holborn Viaduct

Page 27



Existing view from Old Bailey

Citicape House, 61-65 Holborn Viaduct



Proposed view from Old Bailey

Citicape House, 61-65 Holborn Viaduct

Page 29



Existing view from Warwick Lane

Citicape House, 61-65 Holborn Viaduct

Page 30



Proposed view from Warwick Lane

Citicape House, 61-65 Holborn Viaduct

Page 31



Existing view from Smithfield Street

Citicape House, 61-65 Holborn Viaduct

Page 32



Proposed view from Smithfield Street

Citicape House, 61-65 Holborn Viaduct



Existing view from Snow Hill

Citicape House, 61-65 Holborn Viaduct



Proposed view from Snow Hill

Citicape House, 61-65 Holborn Viaduct

Page 35



Existing view from West Smithfield

Citicape House, 61-65 Holborn Viaduct

Page 36



Proposed view from West Smithfield

Citicape House, 61-65 Holborn Viaduct

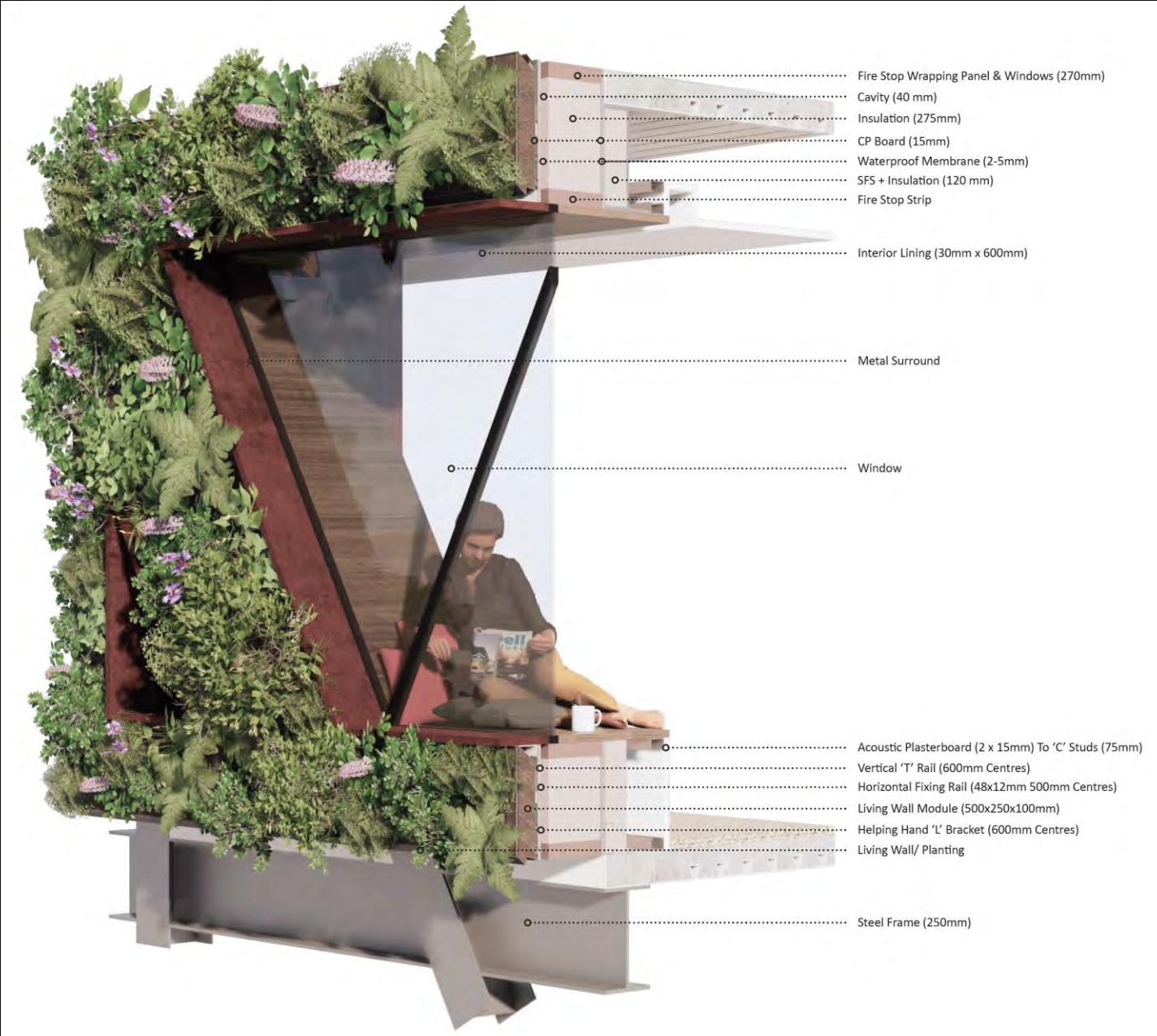


Proposed visual

Citicape House, 61-65 Holborn Viaduct



Citicape House, 61-65 Holborn Viaduct



Proposed facade

Citicape House, 61-65 Holborn Viaduct



Proposed aerial view

Citicape House, 61-65 Holborn Viaduct

Page 41



Proposed visual

Citicape House, 61-65 Holborn Viaduct



Scan Here



④



①



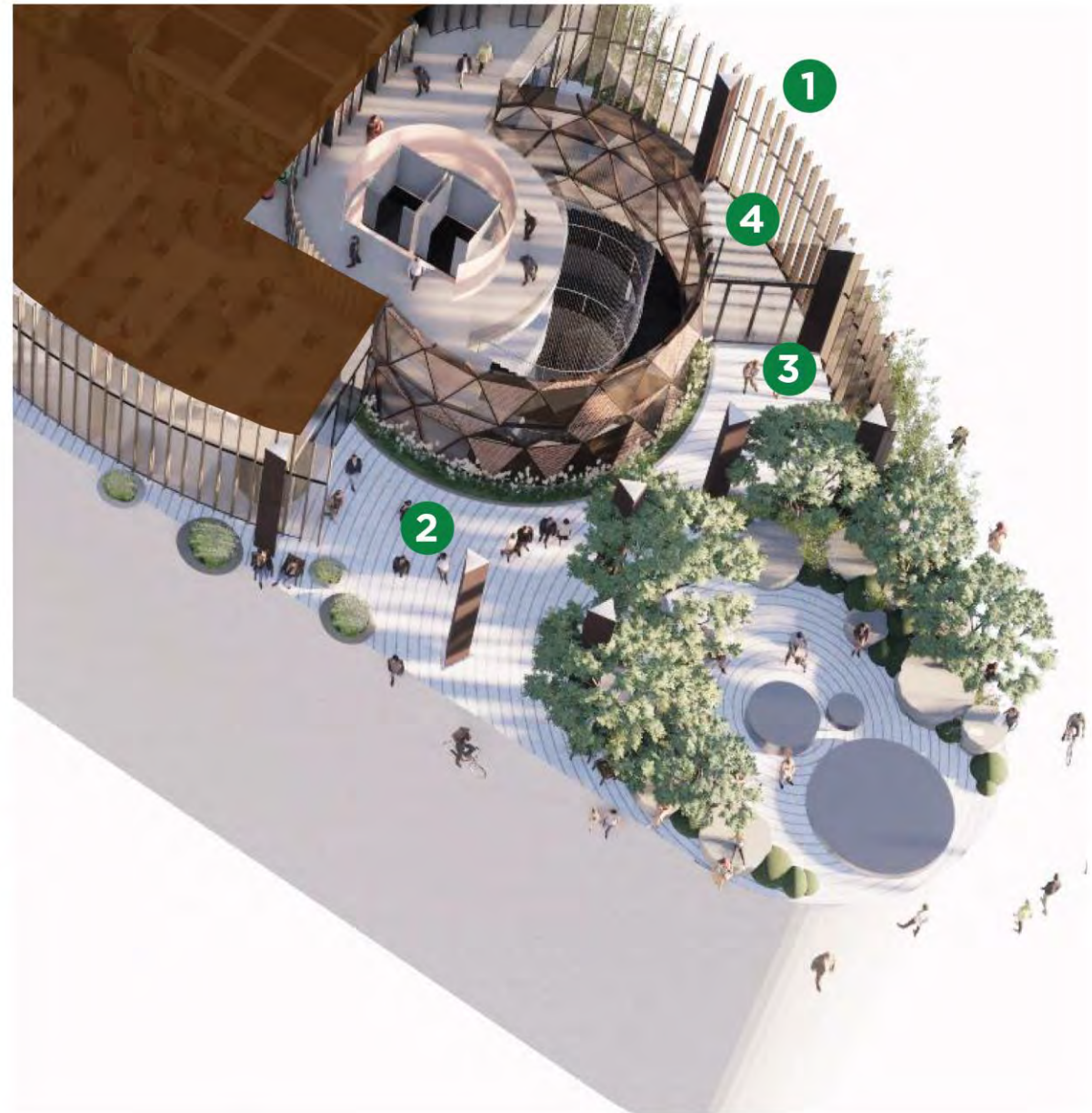
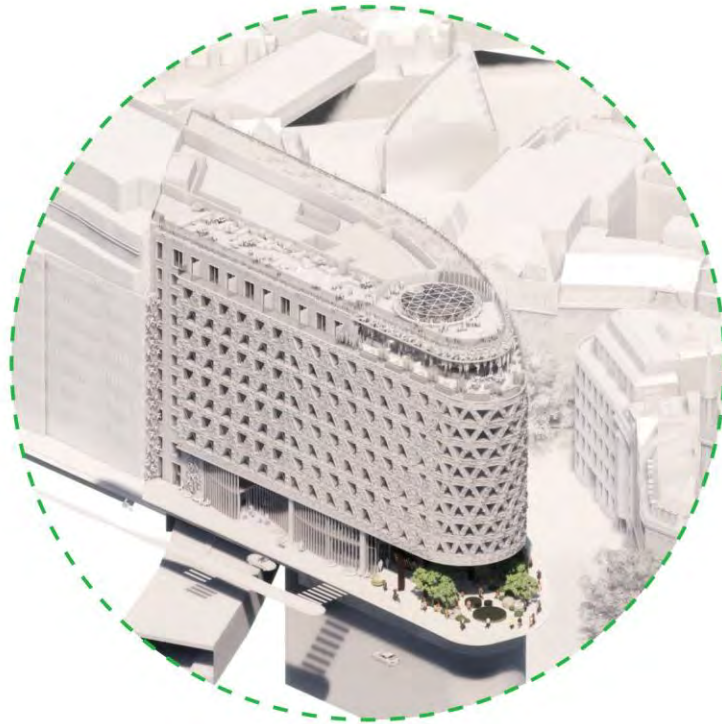
②



③

Proposed visuals

Citicape House, 61-65 Holborn Viaduct



Proposed viewing gallery lobby & grand stair

Citicape House, 61-65 Holborn Viaduct



Proposed visuals - interior

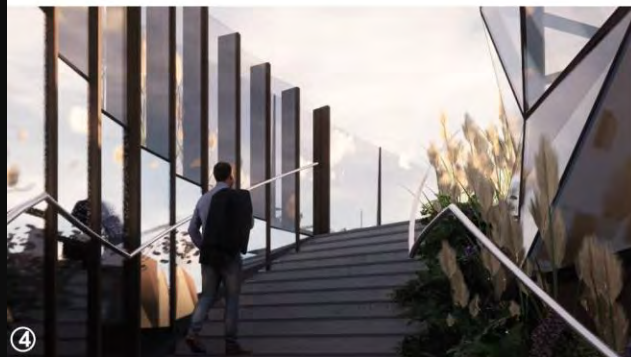
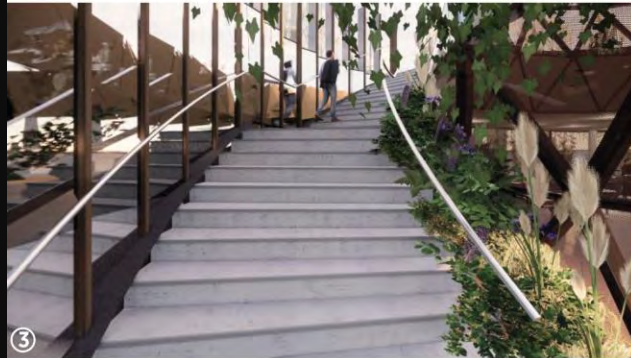
Citicape House, 61-65 Holborn Viaduct

Viewing Gallery Lobby and Skybar



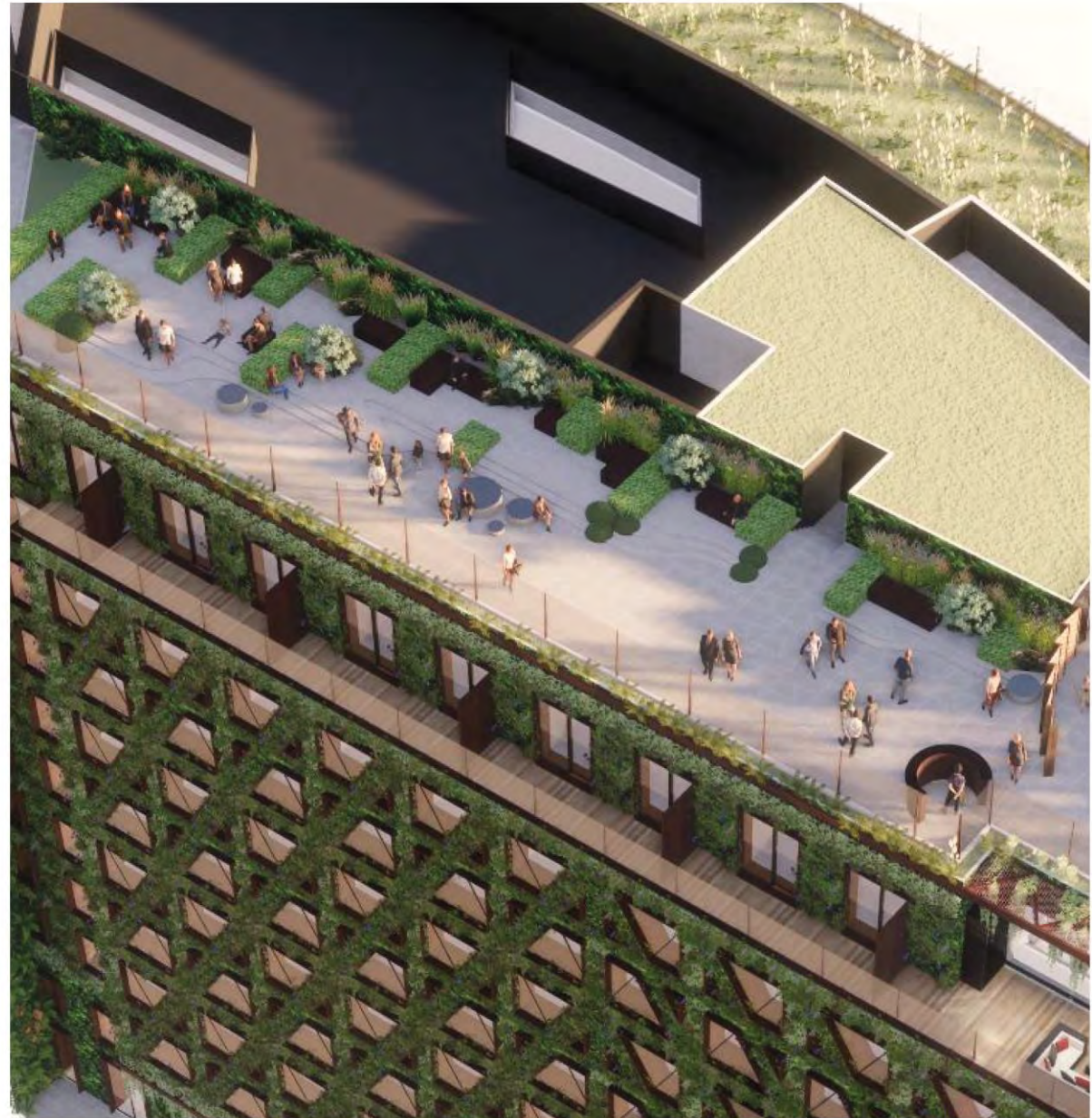
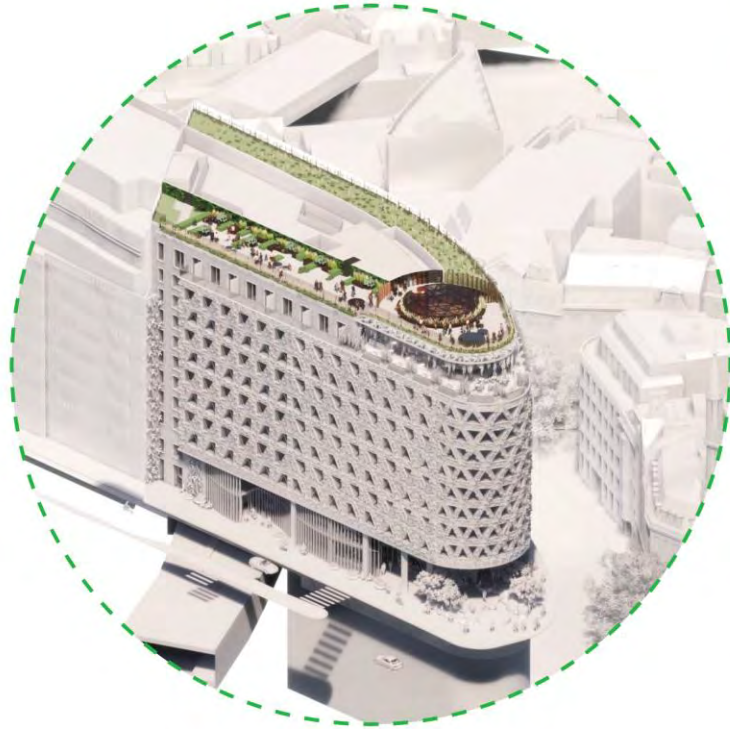
Proposed viewing gallery lobby & skybar

Citicape House, 61-65 Holborn Viaduct



Proposed visuals - interior

Citicape House, 61-65 Holborn Viaduct



Proposed rooftop garden

Citicape House, 61-65 Holborn Viaduct

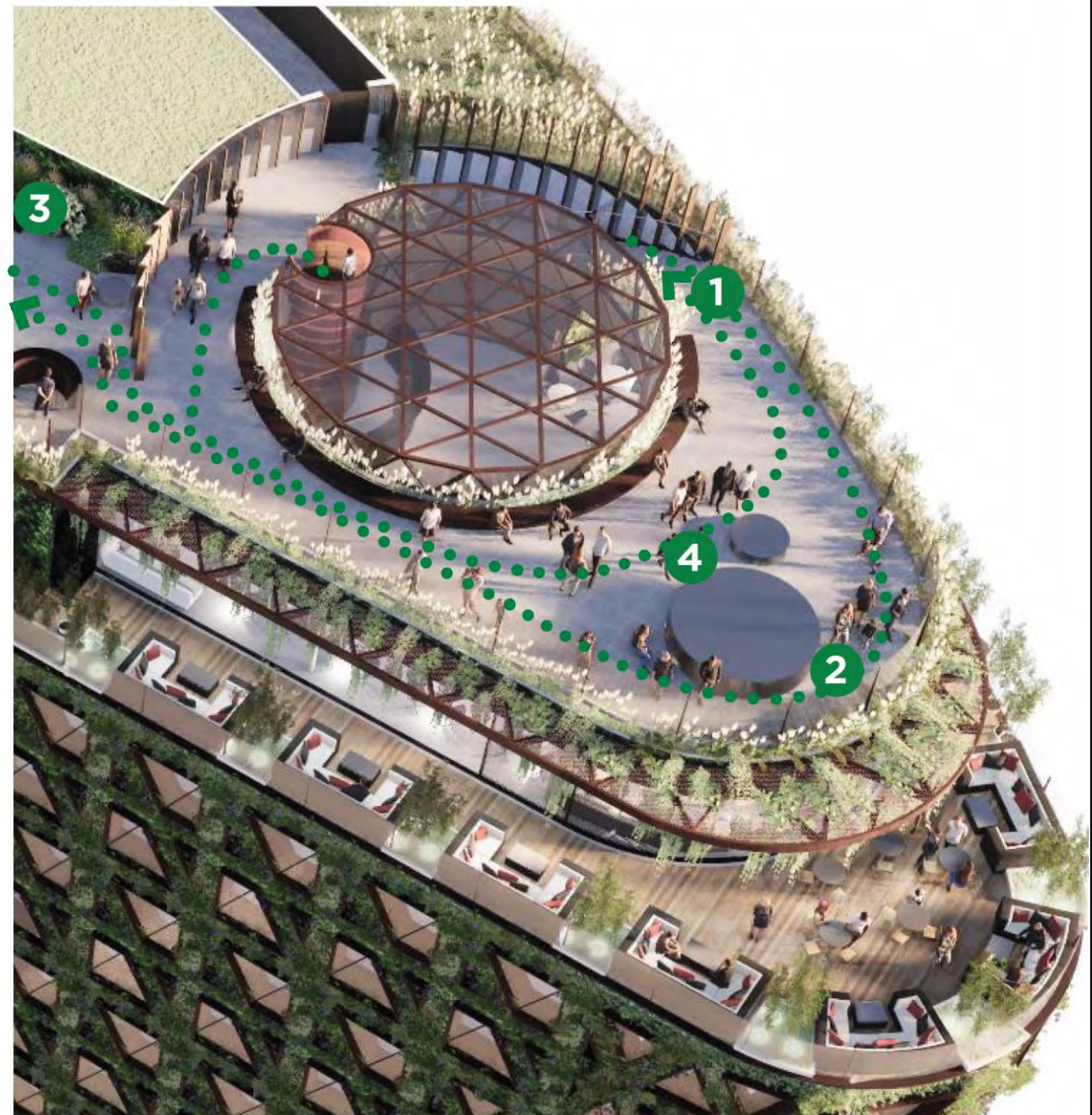


Scan Here



Proposed visual – rooftop garden

Citicape House, 61-65 Holborn Viaduct



Proposed prow of the viewing gallery

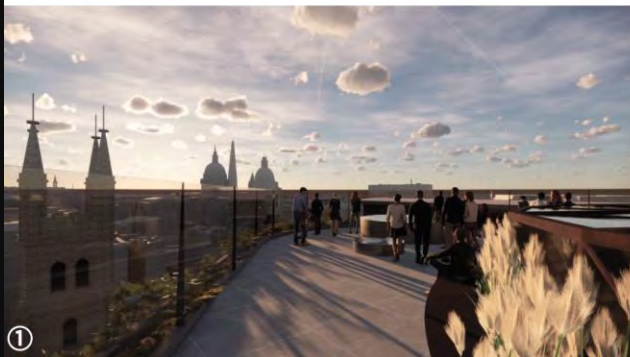
Citicape House, 61-65 Holborn Viaduct



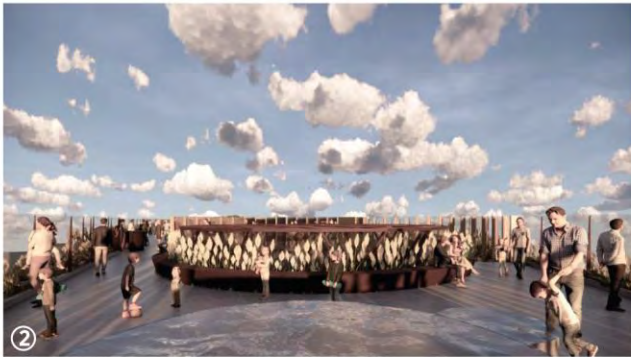
Scan Here



④



①



②



③

Proposed visuals

Citicape House, 61-65 Holborn Viaduct

What the Building Gives back to the City

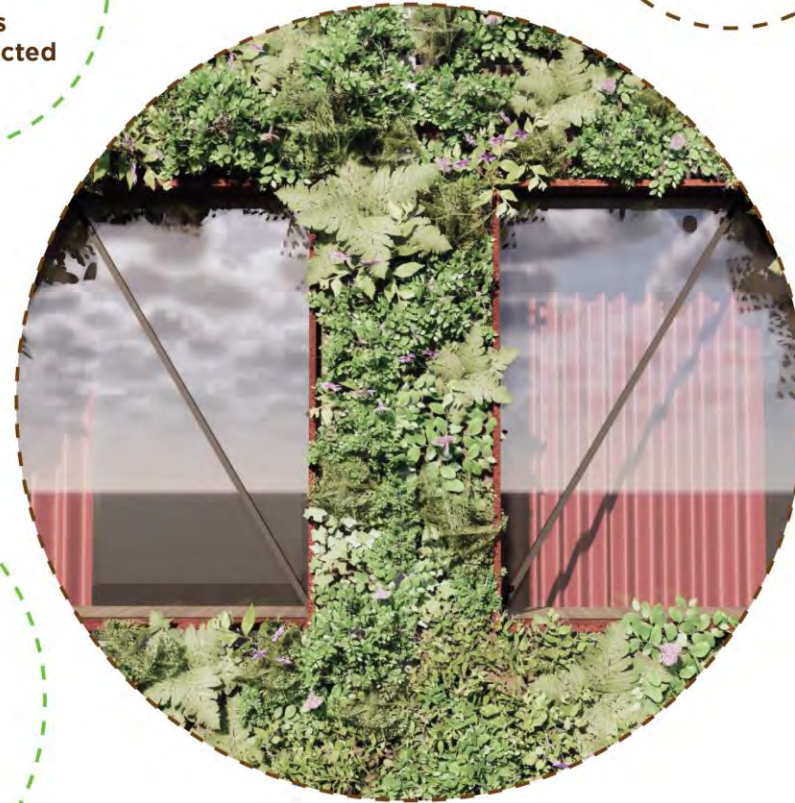


8.5 Tonnes

of Gaseous
Pollution extracted
per year

400,000

New Plants within
the Living Wall



6.3 Tonnes

of Oxygen
produced per year

Benefits

Citicape House, 61-65 Holborn Viaduct



3-5°C
Temperature
reduction in the
immediate vicinity



40,000ft²
of Living Wall.
Largest in Europe.



483kg
of Particulate
Matter trapped per
year

Benefits

Citicape House, 61-65 Holborn Viaduct



Proposed aerial visual

NEXT COMMITTEE

18 February 2020



This page is intentionally left blank